

WARRIOR SURFACE BOXES



Warrior Wide Flange FH & WW

- Heavy Duty - BS750
- Fast Access
- Non-rock
- Single Piece Cover
- Wide Flange
- Markings in the range.
- FH / WW / WM / SV / AV / CE

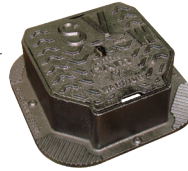


For use in city trunk roads carrying heavy traffic

Standard - BS5834

Warrior SV & WW

- Heavy Duty
- Fast Access
- Non-rock
- Single Piece Cover
- Wide Flange
- Markings in the range.
- SV / WW / WATER



For use in city trunk roads carrying heavy traffic

Standard - BS5834

Warrior SV Tall/Conical

- Heavy Duty
- Fast Access
- Non-rock
- Single Piece Cover
- Wide Flange



For use in city trunk roads carrying heavy traffic

Standard - BS5834

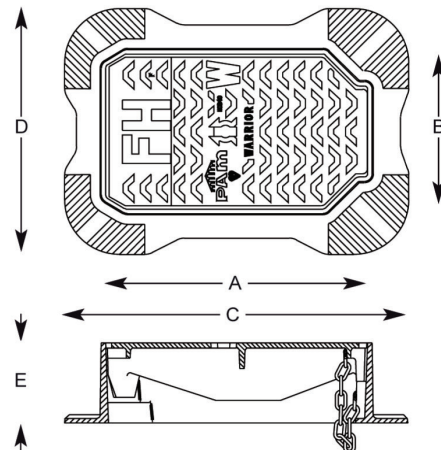
WARRIOR Hydrant Box Ductile Iron - Wide Flange FH & AV

- EN124 C250
- AS3996 Class D

Recommended for use in heavy duty, fast access surface box for use in city trunk roads carrying heavy traffic.

Features

- Wider flange to prevent lateral movement
- Non Rock
- Single piece cover
- Badging option



HB36 1FH	WARRIOR Grade A 380x230x125 Single Piece Cover & Frame (Fire Hydrant) FH Branded	EA
HB36 1WW	WARRIOR Grade A 380x230x125 Single Piece Cover & Frame (Waste Water) WW Branded	EA
HB36 1WM	Warrior Grade A 380x230x125 Single Piece Cover and Frame WM (Water Meter)	EA
HB36 1CE	Warrior Grade A (CE) 380x230x125 Single Piece Cover & Frame (Black Coated)	EA
HB36 1SV	Warrior Grade A (SV) 380x230x125 Single Piece Cover & Frame (Black Coated)	EA
HB36 1AV	Warrior Grade A 380x230x125 Single Piece Cover & Frame AV (Air Valve)	EA

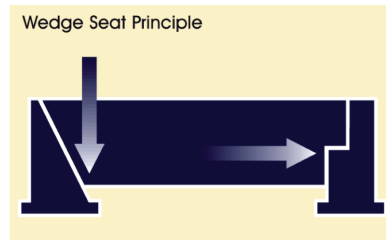


WARRIOR SURFACE BOXES



The Warrior surface box has been specifically designed to offer fast and easy access to emergency and below-ground services.

Manufactured from ductile iron and incorporating the large wedge seating principle, the warrior surface box offers long-term stability and performance.



The Warrior Wedge seating operates in two directions and has seats to ensure the security and location of the cover within the frame.

Conformity

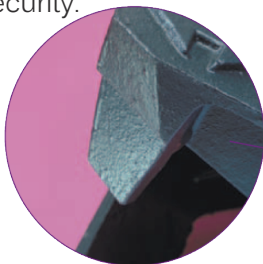
The Warrior surface box fully meets the requirements of BS 5834 Part 3, 1985 and the performance requirements of BS 750 1984. Certified with the BSI Kitemark for quality.

Badging

SV & FH standard badges are available. Contact us for other individual badge requirements.

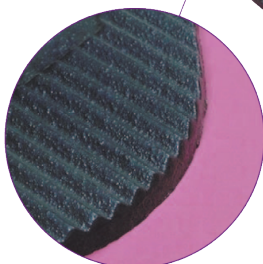
Security

Safety chains can be fitted for added security.



Large Wedge Seatings

Offer non-rock performance and greater stability under heavy traffic loading.



Positive Register

A register is designed into the wedge seat for positive locating each time the cover is closed.

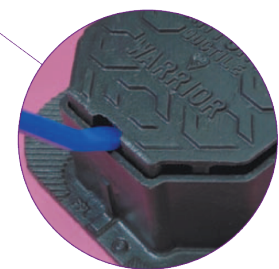
Bonding Ribs

To increase the adhesion between casting and bedding mortar. High performance polyester resin mortar is recommended for installation of this unit.



Unique single-piece

Non-rock, heavy duty design.



Prising Slots

Located at both front and rear of unit for easy opening and fast access to services.

WARRIOR SURFACE BOXES

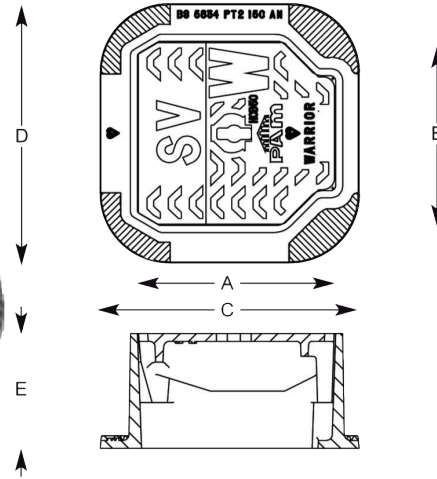


Warrior SV , V , WW and WATER

Recommended for use in heavy duty, fast access surface box for use in city trunk roads carrying heavy traffic.

Features

- Non Rock
- Single piece cover
- Badging option
- EN124 C250
- AS3996 Class D



HB50 1	WARRIOR Grade A 150x150x100 Single Piece Cover & Frame (SV) Branded	EA
HB54 1	WARRIOR Grade A 225x225x100 Single Piece Cover & Frame (SV) Branded	EA
HB54-1WW	WARRIOR Grade A 225x225x100 Single Piece Cover & Frame (WW) Branded	EA
HB54 1WATER	Warrior Grade A (WATER) 225x225x100 Single Piece Cover & Frame	EA
HB58 1	WARRIOR Grade A 300x300x100 Single Piece Cover & Frame (SV) Branded	EA
HB80 1	WARRIOR Grade A 150x150x225 Single Piece Cover & Frame (SV) Branded	EA



Code	BS 5834	Clear Opening	Over Base	Depth	Total
Standard	Grade	A x B	C x D	E	Mass
Unit		mm	mm	mm	Kg
HB50 1	A	150 x 150	225 x 225	100	8.5
HB80 1	A	150 x 150	225 x 225	225	14
HB54 1	A	225 x 225	325 x 325	100	13.5
HB58 1	A	300 x 300	400 x 400	100	20